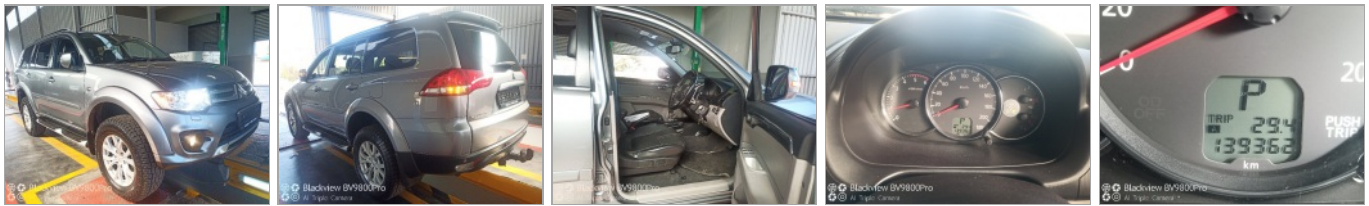


KOOS & MIKE USED CARS  
, VANDERBIJLPARK  
Gauteng

DEKRA Vanderbijl Park  
Jorissen Str - 1911  
VANDERBIJLPARK - GT  
016 931 3126



### Assignment

Client	KOOS & MIKE USED CARS	Inspection Location	DEKRA Vanderbijl Park
Requested Date	06/11/2024		Jorissen Street - 1911
Inspection Date	06/11/2024		Vanderbijlpark -

### Vehicle Data

Vehicle Type	PASSENGER VEHICLE	Registered Owner	KOOS & MIKE
Manufacturer	MITSUBISHI	Registration Number	DD87RFGP
Model	PAJERO	Register Number	TVT053W
VIN	MMBGYKH40ED018737	Date Of First Licensing	15/07/2014
Engine Number	4D56UCZX2205	Last COR	
Doors	5	Last COR	2024/10/18
Color	GREY	License Expiry Date	30/09/2025
Year Model	2014	Power / Displacement	131kW2477cc
Km Reading	139,962 KM	Paint Finish	M - METALLIC
Cab / Body Type	SUV	Fuel	DIESEL
		Transmission	AUTOMATIC

### Vehicle Options & Accessories

#### Items

6 airbags; 4x electrical windows; 4x4; ABS; Airconditioning auto.; Alarm system; Alloy Wheels; Cruise control; Detachable tow bar; El. fold-away mirrors; Fog lights; Handsfree car kit; Leather interior; Leather steering wheel; On-board computer; Park sensor; Power steering; Radio cd; Rain sensor; Traction control system; Xenon headlights;

CENTER CONSOLE WITH 2 CUP HOLDERS, 12V SOCKET AUXILIARY SOCKET, ROOF RAILS AND SIDE STEPS.

## VEHICLE INSPECTION

### Interior

No negative smell was detected in the vehicle interior. Seats with minor signs of wear including discoloration / fading / stains. Interior trim and/or roof lining and/or carpets show minor signs of wear and/or minor staining. Dashboard with normal signs of wear. The cluster without any defects. The functions of heating and ventilation are without detectable defects. The function of control units and/or instrument cluster is without detectable faults. The testable functions of the air condition is without deficiencies. The function of the electric windows is defect-free. Defects were detected on the electric seats and/or seat heaters. Service due and the service record complete.

### Exterior

The rims show no defects which affect the function. The mechanics of doors / bonnet / tailgate are defect-free. No residual traces of damage repair were detected. The vehicle shows normal signs of wear & tear according to age and milage. Vehicle Body with several dents or scratches or corrosion (edge corrosion / surface corroded). Minor paint damage to the primer were detected. The glass panes have stone chips and/or scratches. Hang-on parts (grill, bumpers, mirrors, antennas, strips, etc.) show minor damages. The spare wheel / Emergency Wheel / Repair Set is in good condition. The tire tread depth is more than 1 mm. The tires are in good condition

### Engine, Gearbox, Drivetrain

The engine-oil level is normal with no visible signs of contamination. The cooling system is without testable defects. The coolant level is normal. The engine shows traces of oil sweat. The gearbox and/or drive shaft show traces of oil sweat. The exhaust system shows signs of damages and/or rust, the functionality is not affected. During the road test no deficiencies were detected on gearshift, clutch, automatic transmissions. During the road test no atypical noises were detected. Minor defects were detected on engine, gearbox, drivetrain - the functionality is not affected.

### Axles, Undercarriage

The brake fluid level is normal with no visible signs of contamination. Brake pads and discs show signs of wear & tear. The brake pads and/or discs show signs of wear & tear. The undercarriage with minor damages. Minor defects on axles an / or suspension were detected - the functionality is not affected.

## Brakes

### Brake Test Results

Brake efficiency tested during road test.

	Left	Right	Axle Weight [KG]	Deceleration [m/s <sup>2</sup> ]
	Braking Force [KN]	Braking Force [KN]		
Front	-	-	-	
Rear	-	-	-	
Emergency / Parking	-	-	-	

## Tyres and Rims

### Tyre Specification & Measurement

	Size	Load/Speed Index	Manufacture	Model	Type*	Production Date	Tread Depth (mm)
Front Left	265/65R17	112T	Pirelli	Scorpion	V	0120	9 mm
Front Right	265/65R17	112T	Pirelli	Scorpion	V	0120	9 mm
Rear Left	265/65R17	112T	Pirelli	Scorpion	V	0120	9 mm
Rear Right	265/65R17	112T	Pirelli	Scorpion	V	0120	9 mm
Spare	265/65R17	112S	Bridgestone	Dueler	V	--	9 mm

\* Tyre Legend: V=Virgin, R=Recap

Tyre tread depth minimum 1mm according to National Road Traffic Act 93 of 1996.

## Diagnostic

A vehicle diagnostic has not been conducted.

## Inspection Conditions

Vehicle Dirty

Engine number – not possible to verify engine number (not visible without dismantling)

Inspection conditions for the vehicle inspection were sufficient

## Comments

General Comments: ACCORDING TO THE AGE AND MILEAGE OF THE VEHICLE, NORMAL WEAR AND TEAR MARKS ARE VISIBLE ON THE INTERIOR, EXTERIOR, ELECTRICAL AND MECHANICAL PARTS

Lights: Normal signs of wear on electrical and mechanical part and interior of the vehicle.

Body • Exterior: Vehicle has signs of small dents, chips and scratches on some body panels.

## Concluding Remarks

THIS REPORT HAS BEEN DRAWN UP IMPARTIALLY AND TO THE BEST OF OUR KNOWLEDGE

## Technician

Petrus Mapongwane Makhubo

This document was created electronically and is valid without signature.

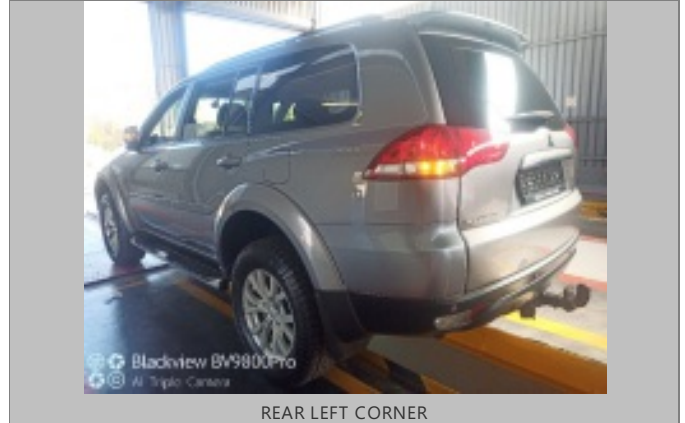
General Remarks: The DEKRA Condition Report Inspection is a visual and functional check of all the items listed inside the report. DEKRA is not liable for concealed and hidden defects. DEKRA doesn't check: oil and fuel consumption, source of a leak if the area is dirty, oil pump strainer for any build-up of sludge, operation of cassette players or compact disc players, sound or radio reception, alarm systems, cylinder compression. We don't dismantle, remove or strip any part of the vehicle. Road testing is carried out within the immediate confines of the inspection location. This condition report is valid only for the described vehicle and the described condition at the time of inspection. DEKRA Terms & Conditions apply.

ROADWORTHY RELEVANT DAMAGES

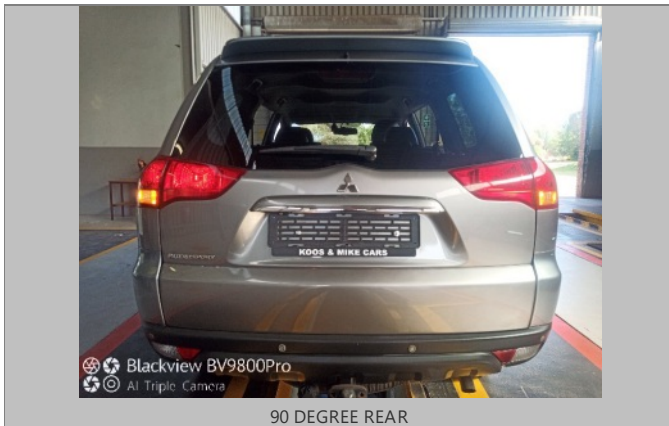
Damage	Repair Way	Repair Cost	%	Pro Rata
During the time of test,no defects were detected.	Roadworthy Relevant	0	0 %	0
<b>Total:</b>		<b>0</b>		<b>0</b>



FRONT RIGHT CORNER



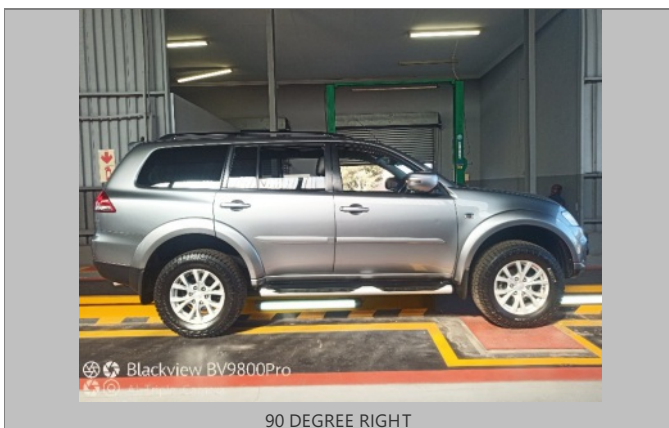
REAR LEFT CORNER



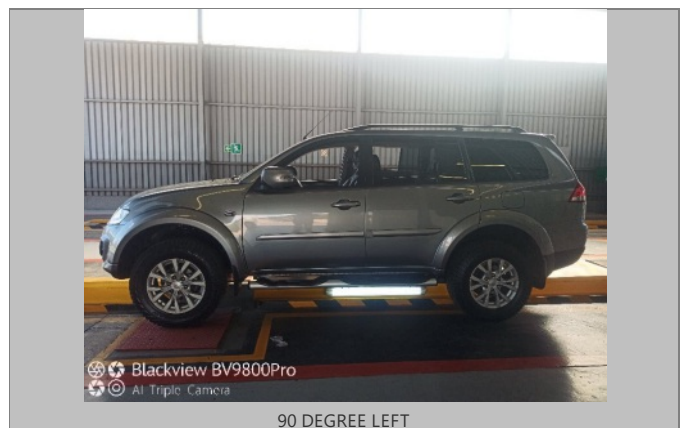
90 DEGREE REAR



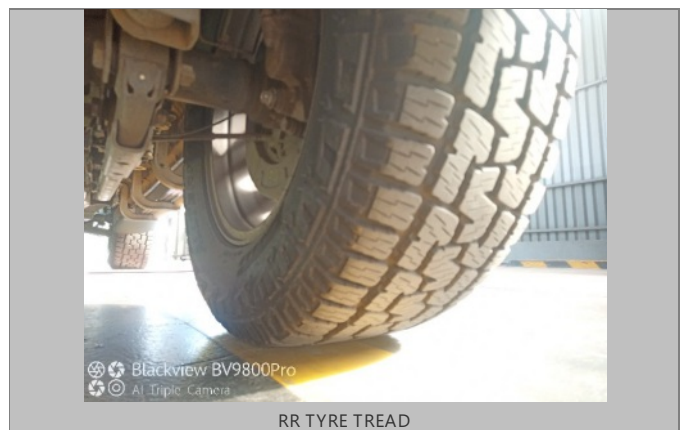
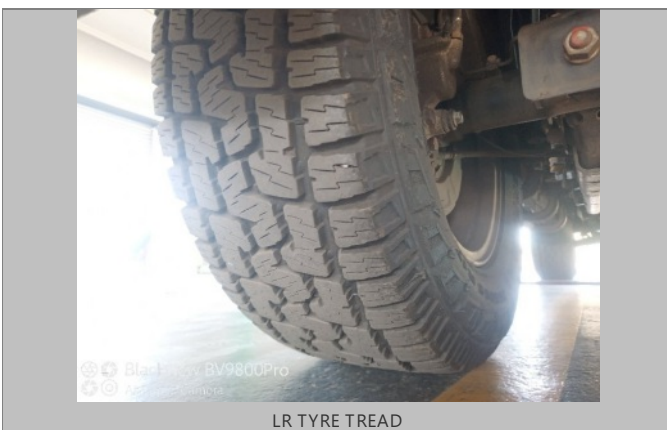
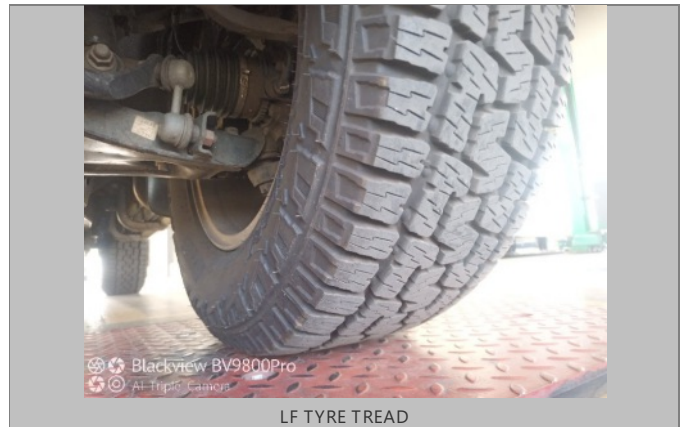
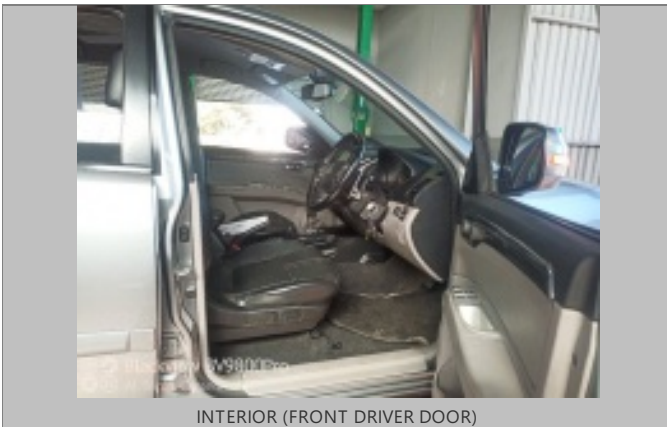
90 DEGREE FRONT



90 DEGREE RIGHT

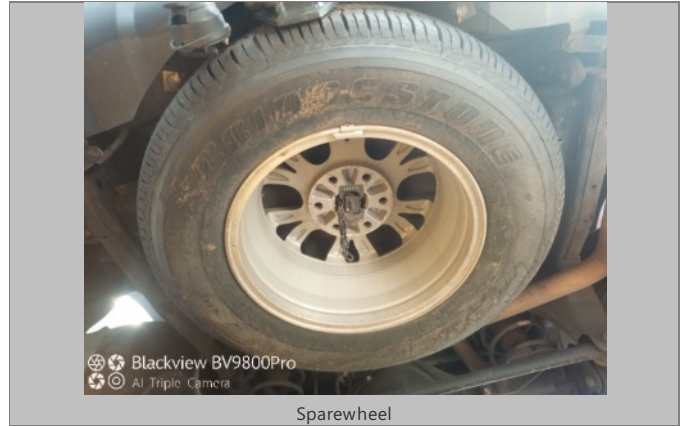


90 DEGREE LEFT





RF TYRE TREAD



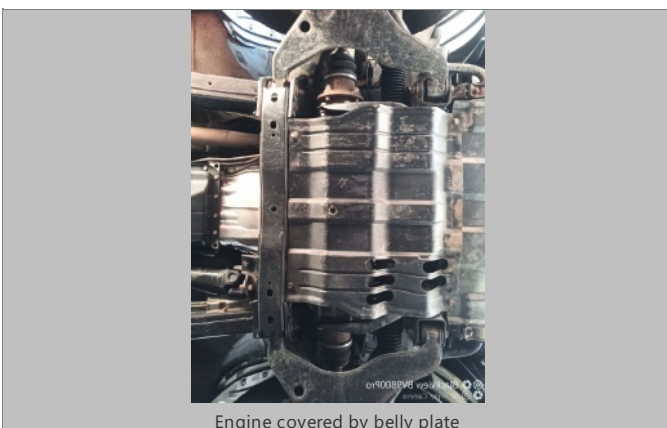
Sparewheel



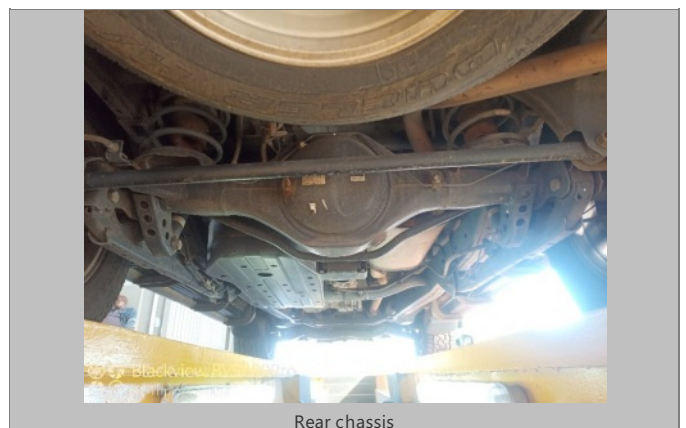
Oil filler cap and dipstick



Expansion bottle



Engine covered by belly plate



Rear chassis



CHASSIS



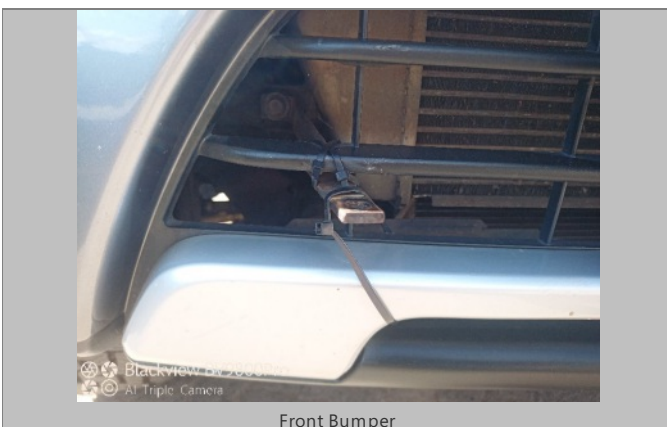
ENGINE 1



VIN PLATE OR STICKER



LICENSE DISC



Front Bumper