

KOOS & MIKE USED CARS
, VANDERBIJLPARK
Gauteng

DEKRA Vanderbijl Park
Jorissen Str - 1911
VANDERBIJLPARK - GT
016 931 3126



Assignment

Client	KOOS & MIKE USED CARS	Inspection Location	DEKRA Vanderbijl Park
Requested Date	16/08/2024		Jorissen Street - 1911
Inspection Date	16/08/2024		Vanderbijlpark -

Vehicle Data

Vehicle Type	PASSENGER VEHICLE	Registered Owner	KOOS & MIKE
Manufacturer	OPEL	Registration Number	KZ09PPGP
Model	ADAM	Register Number	GRG322K
VIN	W0L0MAP08F6081142	Date Of First Licensing	04/01/2016
Engine Number	B1151314CYRX0047	Last COR	
Doors	3	Last COR	2021/12/07
Color	BROWN	License Expiry Date	16/08/2023
Year Model	2016	Power / Displacement	85kW/999cc
Km Reading	66,624 KM	Paint Finish	M - METALLIC
Cab / Body Type	HATCHBACK	Fuel	PETROL
		Transmission	MANUAL

Vehicle Options & Accessories

Items

6 airbags; 2x electrical windows; ABS; Airconditioning auto.; Alarm system; Alloy Wheels; Central locking; Cruise control; El. mirrors; Fog lights; Leather interior; Leather steering wheel; Multifunction steering wheel; On-board computer; Park sensor; Power steering; Radio / Cassette; Rain sensor; Traction control system; Xenon headlights;

CENTER CONSOLE WITH 2 CUP HOLDERS, ISOFIX TINTED WINDOWS, 12V SOCKET, AUXILIARY AND USB PORT.

VEHICLE INSPECTION

Interior

No negative smell was detected in the vehicle interior. Seats with minor signs of wear including discoloration / fading / stains. Interior trim and/or roof lining and/or carpets show minor signs of wear and/or minor staining. Dashboard with normal signs of wear. The cluster without any defects. The functions of heating and ventilation are without detectable defects. The function of control units and/or instrument cluster is without detectable faults. The testable functions of the air condition is without deficiencies. The function of the electric windows is defect-free. Defects were detected on the electric seats and/or seat heaters. Service due and the service record incomplete.

Exterior

The rims show no defects which affect the function. The mechanics of doors / bonnet / tailgate are defect-free. No residual traces of damage repair were detected. The vehicle shows normal signs of wear & tear according to age and milage. Vehicle Body with several dents or scratches or corrosion (edge corrosion / surface corroded). Minor paint damage to the primer were detected. The glass panes have stone chips and/or scratches. Hang-on parts (grill, bumpers, mirrors, antennas, strips, etc.) show minor damages. The spare tire / emergency wheel / repair set shows signs of wear & tear. The tire tread depth is more than 1 mm. The tires are in good condition

Engine, Gearbox, Drivetrain

The engine-oil level is normal with no visible signs of contamination. The cooling system is without testable defects. The coolant level is normal. The engine shows traces of oil sweat. The gearbox and/or drive shaft show traces of oil sweat. The exhaust system shows signs of damages and/or rust, the functionality is not affected. During the road test no deficiencies were detected on gearshift, clutch, automatic transmissions. During the road test no atypical noises were detected. Minor defects were detected on engine, gearbox, drivetrain - the functionality is not affected.

Axles, Undercarriage

The brake fluid level is normal with no visible signs of contamination. Brake pads and discs show signs of wear & tear. The brake pads and/or discs show signs of wear & tear. The undercarriage with minor damages. Minor defects on axles an / or suspension were detected - the functionality is not affected.

Brakes

Brake Test Results

Brake efficiency tested during road test.

	Left	Right	Axle Weight [KG]	Deceleration [m/s ²]
	Braking Force [KN]	Braking Force [KN]		
Front	2.5	2.46	-	
Rear	1.46	1.47	-	
Emergency / Parking	1.23	1.25	-	

Tyres and Rims

Tyre Specification & Measurement

	Size	Load/Speed Index	Manufacture	Model	Type*	Production Date	Tread Depth (mm)
Front Left	215/45R17	91W	Royal Black	Performance	V	4323	5 mm
Front Right	215/45R17	91Y	Diamondback	DSH11	V	2920	5 mm
Rear Left	215/45R17	87V	Continental	Contact	V	1915	3 mm
Rear Right	215/45R17	87V	Continental	Contact	V	1915	3 mm
Spare	R11570R16	92M	Continental	Temporary	V	--	3 mm

* Tyre Legend: V=Virgin, R=Recap

Tyre tread depth minimum 1mm according to National Road Traffic Act 93 of 1996.

Diagnostic

A vehicle diagnostic has not been conducted.

Inspection Conditions

Vehicle Dirty

Engine number – not possible to verify engine number (not visible without dismantling)

Inspection conditions for the vehicle inspection were sufficient

Comments

General Comments: ACCORDING TO THE AGE AND MILEAGE OF THE VEHICLE, NORMAL WEAR AND TEAR MARKS ARE VISIBLE ON THE INTERIOR, EXTERIOR, ELECTRICAL AND MECHANICAL PARTS.NO ELECTRICAL ADJUSTABLE SEATS=INSUFFICIENT.

Concluding Remarks

THIS REPORT HAS BEEN DRAWN UP IMPARTIALLY AND TO THE BEST OF OUR KNOWLEDGE

Technician

Petrus Mapongwane Makhubo

This document was created electronically and is valid without signature.

General Remarks: The DEKRA Condition Report Inspection is a visual and functional check of all the items listed inside the report. DEKRA is not liable for concealed and hidden defects. DEKRA doesn't check: oil and fuel consumption, source of a leak if the area is dirty, oil pump strainer for any build-up of sludge, operation of cassette players or compact disc players, sound or radio reception, alarm systems, cylinder compression. We don't dismantle, remove or strip any part of the vehicle. Road testing is carried out within the immediate confines of the inspection location. This condition report is valid only for the described vehicle and the described condition at the time of inspection. DEKRA Terms & Conditions apply.

ROADWORTHY RELEVANT DAMAGES

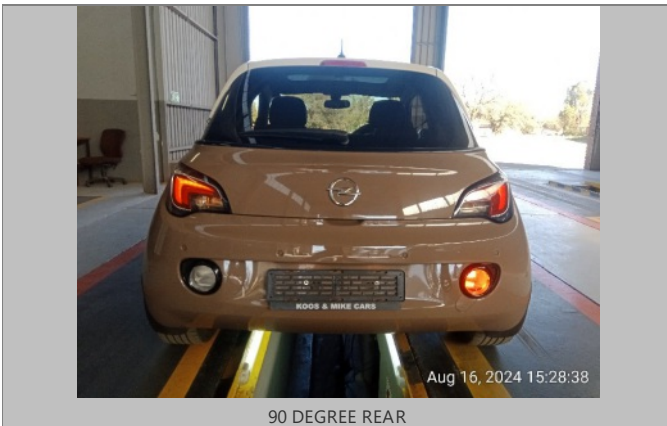
Damage	Repair Way	Repair Cost	%	Pro Rata
During time of the test no defects were detected.	Roadworthy Relavant	0	0 %	0
Total:		0		0



FRONT RIGHT CORNER



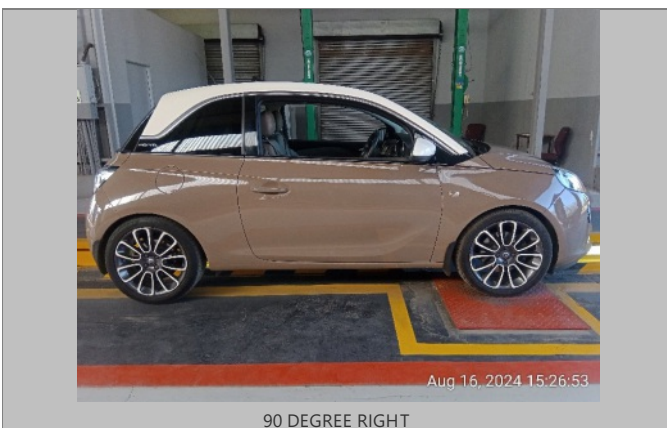
REAR LEFT CORNER



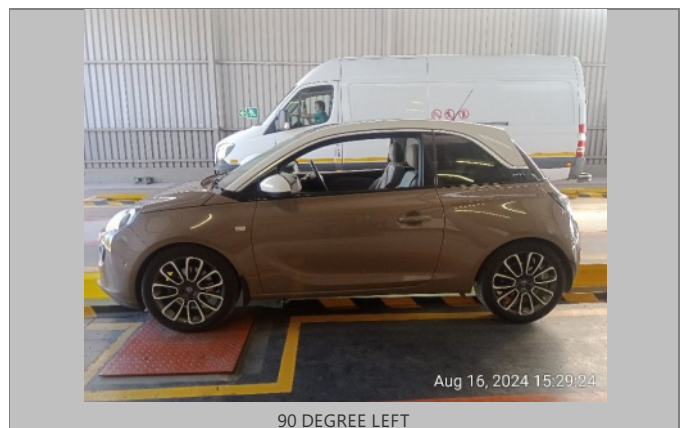
90 DEGREE REAR



90 DEGREE FRONT



90 DEGREE RIGHT



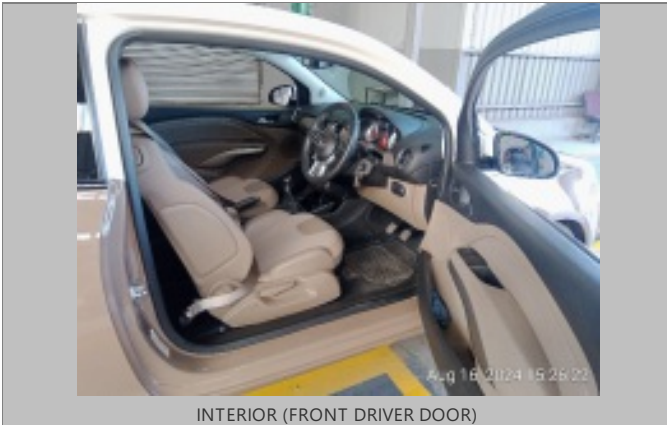
90 DEGREE LEFT



ODOMETER



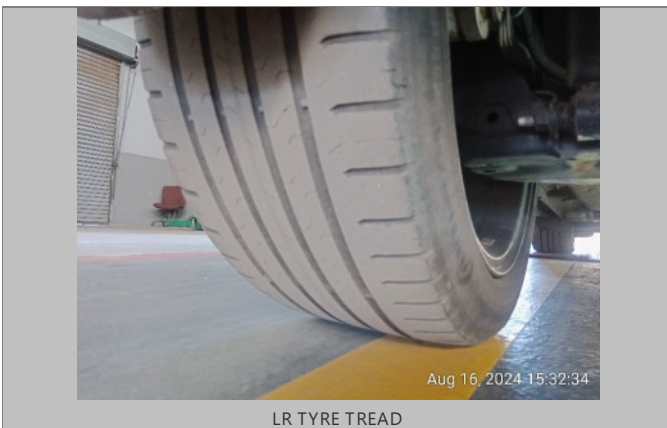
DASHBOARD (W/ ENGINE RUNNING)



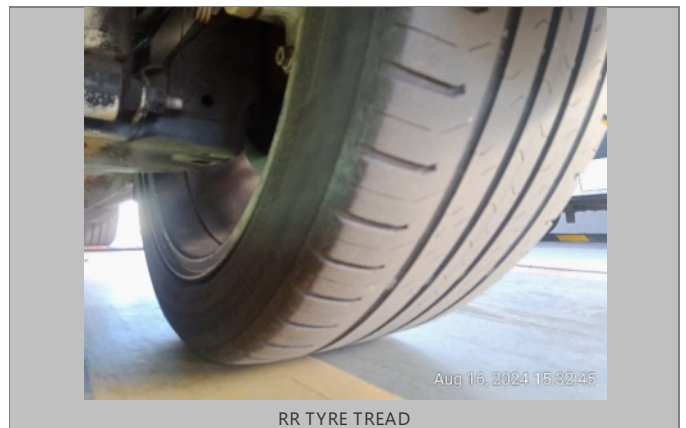
INTERIOR (FRONT DRIVER DOOR)



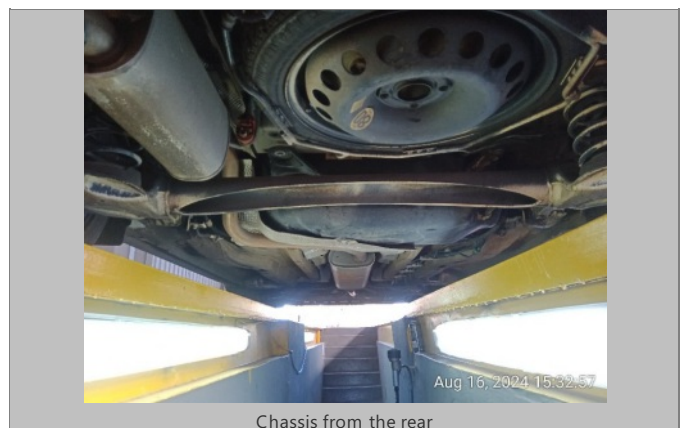
LF TYRE TREAD



LR TYRE TREAD



RR TYRE TREAD





ENGINE 1



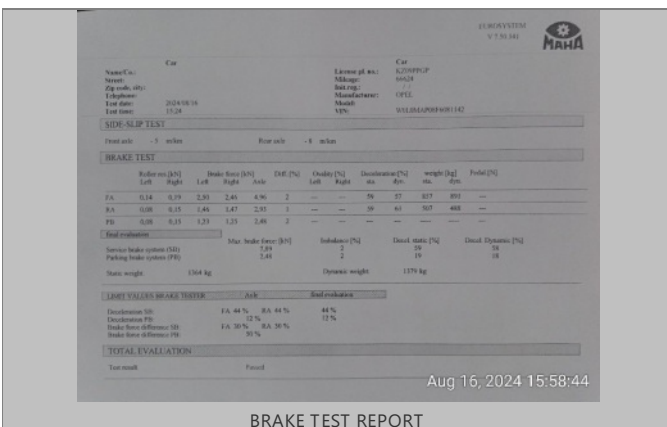
ENGINE 2



VIN PLATE OR STICKER



LICENSE DISC



BRAKE TEST REPORT