

KOOS & MIKE USED CARS
, VANDERBIJLPARK
Gauteng

DEKRA Vanderbijl Park
Jorissen Str - 1911
VANDERBIJLPARK - GT
016 931 3126



Assignment

Client	KOOS & MIKE USED CARS	Inspection Location	DEKRA Vanderbijl Park
Requested Date	12/08/2024		Jorissen Street - 1911
Inspection Date	12/08/2024		Vanderbijlpark -

Vehicle Data

Vehicle Type	LIGHT LOAD VEHICLE	Registered Owner	KOOS AND MIKE
Manufacturer	VOLKSWAGEN	Registration Number	JX14LCGP
Model	VW 326 TIGUAN	Register Number	HSB455K
VIN	WVGZZZ5NZKW399370	Date Of First Licensing	25/10/2019
Engine Number	COVERED	Last COR	
Doors	5	Last COR	28/05/2021
Color	WHITE	License Expiry Date	30/06/2025
Year Model	2019	Power / Displacement	110kw 1395cc
Km Reading	81,838 KM	Paint Finish	C - COMMON
Cab / Body Type	HATCHBACK	Fuel	PETROL
		Transmission	AUTOMATIC

Vehicle Options & Accessories

Items

6 airbags; 4x electrical windows; ABS; Airconditioning auto.; Alarm system; Alloy Wheels; Central locking; Cruise control; El. fold-away mirrors; Fog lights; Front armrest; Handsfree car kit; Leather interior; Multifunction steering wheel; On-board computer; Park sensor; Power steering; Radio / Cassette;

2 USB AND AUXILIARY

VEHICLE INSPECTION

Interior

No negative smell was detected in the vehicle interior. The condition of the seats is good and the seats show no mechanical defects. Interior trim and/or roof lining and/or carpets show no signs of wear and are in a very well kept overall condition. Dashboard with minor signs of wear. The cluster without any defects. The functions of heating and ventilation are without detectable defects. The function of control units and/or instrument cluster is without detectable faults. The testable functions of the air condition is without deficiencies. The function of the electric windows is defect-free. Defects were detected on the electric seats and/or seat heaters. Service due and the service record incomplete.

Exterior

The rims are in good condition. The mechanics of doors / bonnet / tailgate are defect-free. No residual traces of damage repair were detected. The vehicle shows minor signs of wear & tear. Vehicle Body in good condition, minor dents or scratches. The paint finish is very good, except for minor scratches on the paint surface. The glass panes show minor signs of wear and scratches. Hang-on parts (grill, bumpers, mirrors, antennas, strips, etc.) show normal signs of wear & tear. The spare wheel / Emergency Wheel / Repair Set is in good condition. The tire tread depth is more than 1 mm. The tires are in good condition

Engine, Gearbox, Drivetrain

The engine-oil level is normal with no visible signs of contamination. The cooling system is without testable defects. The coolant level is normal. The engine shows traces of oil sweat. The gearbox and/or drive shaft show traces of oil sweat. The exhaust system shows signs of damages and/or rust, the functionality is not affected. During the road test no deficiencies were detected on gearshift, clutch, automatic transmissions. During the road test no atypical noises were detected. No defects were detected on engine, gearbox, drivetrain.

Axles, Undercarriage

The break fluid level is normal with no visible signs of contamination. Brake pads and discs show signs of wear & tear. The brake pads and/or discs show signs of wear & tear. The undercarriage with minor damages. Minor defects on axles an / or suspension were detected - the functionality is not affected.

Brakes

Brake Test Results

	Left	Right	Axle Weight [KG]	Deceleration [m/s ²]
	Braking Force [KN]	Braking Force [KN]		
Front	3.1	3.2	999	65.0
Rear	2.3	2.3	742	65.0
Emergency / Parking	1.3	1.3	742	16

Tyres and Rims

Tyre Specification & Measurement

	Size	Load/Speed Index	Manufacture	Model	Type*	Production Date	Tread Depth (mm)
Front Left	225/60R17	99T	Westlake	SU318	V	4921	4 mm
Front Right	225/60R17	99T	Westlake	SU318	V	4921	4 mm
Rear Left	225/60R17	99T	Westlake	SU318	V	4921	4 mm
Rear Right	225/60R17	99T	Westlake	SU318	V	4921	4 mm
Spare	215/65R17	99V	Michelin	Primacy	V	0000	5 mm

* Tyre Legend: V=Virgin, R=Recap

Tyre tread depth minimum 1mm according to National Road Traffic Act 93 of 1996.

Diagnostic

A vehicle diagnostic has not been conducted.

Inspection Conditions

Vehicle Dirty

Engine number – not possible to verify engine number (not visible without dismantling)

Inspection conditions for the vehicle inspection were sufficient

Comments

General Comments: ACCORDING TO THE AGE AND MILEAGE OF THE VEHICLE, NORMAL WEAR AND TEAR MARKS ARE VISIBLE ON THE INTERIOR, EXTERIOR, ELECTRICAL AND MECHANICAL PARTS.

Lights: Warning light of a low tyre

Body • Exterior: Minor Dents, Chips and Scratches. Signs of cosmetical improvement on various panels.

Undercarriage: Belly plate not removed

Concluding Remarks

THIS REPORT HAS BEEN DRAWN UP IMPARTIALLY AND TO THE BEST OF OUR KNOWLEDGE

Technician

Thabo Moloto

This document was created electronically and is valid without signature.

General Remarks: The DEKRA Condition Report Inspection is a visual and functional check of all the items listed inside the report. DEKRA is not liable for concealed and hidden defects. DEKRA doesn't check: oil and fuel consumption, source of a leak if the area is dirty, oil pump strainer for any build-up of sludge, operation of cassette players or compact disc players, sound or radio reception, alarm systems, cylinder compression. We don't dismantle, remove or strip any part of the vehicle. Road testing is carried out within the immediate confines of the inspection location. This condition report is valid only for the described vehicle and the described condition at the time of inspection. DEKRA Terms & Conditions apply.

ROADWORTHY RELEVANT DAMAGES

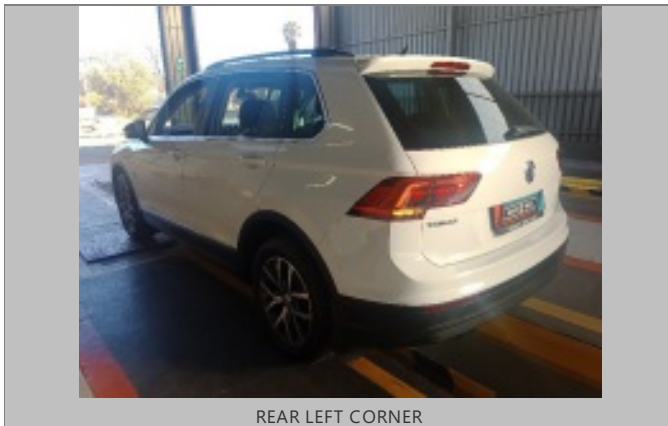
Damage	Repair Way	Repair Cost	%	Pro Rata
During test no defective for	Roadworthy Relevant	0	0 %	0
Total:		0		0

SIDE SLIP TEST											
Front axle						Rear axle					
BRAKE TEST											
Brake type (S/N)	Left	Right	Brake force (kN)	Left	Right	ABS (%)	Onset (%)	Deceleration (%)	Weight (kg)	Prob (%)	
FA	0.20	0.20	5.18	5.27	6.43	2	---	86	62	999	---
RA	0.13	0.19	2.52	2.30	4.08	3	---	60	87	782	---
PP	0.13	0.19	1.24	1.37	2.71	2	---	---	---	---	---
Final evaluation											
Service brake system (S/N)	Max. brake force (kN)		Brake force (%)		Dist. state (%)		Brake Distance (%)				
Parking brake system (P/S)	2.71		2.71		2		66		66		
State weight	1741 kg										
LOAD VALUES BRAKE TESTER											
Deceleration (S/N)	FA 44 %		RA 44 %		88 %						
Deceleration (P/S)	FA 50 %		RA 39 %		42 %						
Brake force difference (S/N)	FA 30 %		RA 39 %		30 %						
Brake force difference (P/S)	30 %		30 %		30 %						
TOTAL EVALUATION											
Test result	Passed										

Brakes report



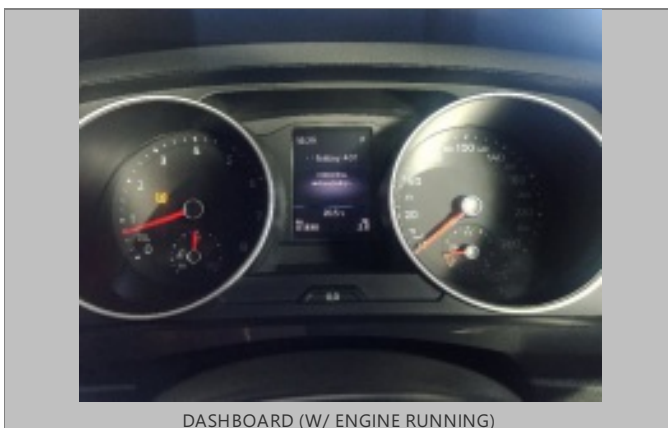
FRONT RIGHT CORNER



REAR LEFT CORNER



INTERIOR (FRONT DRIVER DOOR)



DASHBOARD (W/ ENGINE RUNNING)



ODOMETER



90 DEGREE FRONT



90 DEGREE RIGHT



90 DEGREE REAR



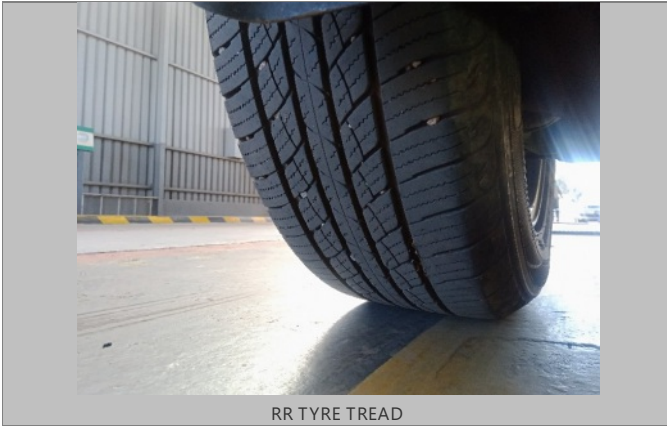
90 DEGREE LEFT



LF TYRE TREAD



LR TYRE TREAD



RR TYRE TREAD



RF TYRE TREAD



Sparewheel



LICENSE DISC



VIN PLATE OR STICKER



ENGINE 1

