

KOOS & MIKE USED CARS
, VANDERBIJLPARK
Gauteng

DEKRA Vanderbijl Park
Jorissen Str - 1911
VANDERBIJLPARK - GT
016 931 3126



Assignment

Client	KOOS & MIKE USED CARS	Inspection Location	DEKRA Vanderbijl Park
Requested Date	12/08/2024		Jorissen Street - 1911
Inspection Date	12/08/2024		Vanderbijlpark -

Vehicle Data

Vehicle Type	PASSENGER VEHICLE	Registered Owner	KOOS AND MIKE
Manufacturer	RENAULT	Registration Number	DP45VKGP
Model	DUSTER	Register Number	VGS932W
VIN	MEEHSRA3600002079	Date Of First Licensing	30/03/2015
Engine Number	COVERED	Last COR	
Doors	5	Last COR	12/08/2024
Color	GREY	License Expiry Date	30/09/2024
Year Model	2014	Power / Displacement	80kw1461cc
Km Reading	120,089 KM	Paint Finish	C - COMMON
Cab / Body Type	STATION WAGON	Fuel	DIESEL
		Transmission	MANUAL

Vehicle Options & Accessories

Items

(Fixed) tow bar; 4 airbags; 4x electrical windows; ABS; Airconditioning; Alarm system; Alloy Wheels; Central locking; El. mirrors; Fog lights; Handsfree car kit; Leather steering wheel; Navigation system; Park sensor; Power steering; Radio / Cassette;

HAS USB AND AUXILIARY

VEHICLE INSPECTION

Interior

No negative smell was detected in the vehicle interior. Seats with minor signs of wear including discoloration / fading / stains. Interior trim and/or roof lining and/or carpets show no signs of wear and are in a very well kept overall condition. Dashboard with minor signs of wear. The cluster without any defects. The functions of heating and ventilation are without detectable defects. The function of control units and/or instrument cluster is without detectable faults. The testable functions of the air condition is without deficiencies. The function of the electric windows is defect-free. Defects were detected on the electric seats and/or seat heaters. Service due and the service record incomplete.

Exterior

The rims show no defects which affect the function. The mechanics of doors / bonnet / tailgate are defect-free. No residual traces of damage repair were detected. The vehicle shows minor signs of wear & tear. Vehicle Body with several dents or scratches or corrosion (edge corrosion / surface corroded). The paint finish is very good, except for minor scratches on the paint surface. The glass panes show minor signs of wear and scratches. Hang-on parts (grill, bumpers, mirrors, antennas, strips, etc.) show normal signs of wear & tear. The spare wheel / Emergency Wheel / Repair Set is in good condition. The tire tread depth is more than 1 mm. The tires are in good condition

Engine, Gearbox, Drivetrain

The engine-oil level is normal with no visible signs of contamination. The cooling system is without testable defects. The coolant level is normal. The engine is without visible oil leak. The gearbox and drive shaft without visible oil loss. The exhaust system in good condition. During the road test no deficiencies were detected on gearshift, clutch, automatic transmissions. During the road test no atypical noises were detected. No defects were detected on engine, gearbox, drivetrain.

Axles, Undercarriage

The brake fluid level is normal with no visible signs of contamination. Brake pads and discs show signs of wear & tear. The brake pads and/or discs show signs of wear & tear. The undercarriage with minor damages. Minor defects on axles an / or suspension were detected - the functionality is not affected.

Brakes

Brake Test Results

	Left	Right	Axle Weight [KG]	Deceleration [m/s ²]
	Braking Force [KN]	Braking Force [KN]		
Front	2.8	2.6	907	61.0
Rear	1.8	1.8	639	61.0
Emergency / Parking	1.6	1.5	639	21

Tyres and Rims

Tyre Specification & Measurement

	Size	Load/Speed Index	Manufacture	Model	Type*	Production Date	Tread Depth (mm)
Front Left	215/65R16	98T	Velocity	Rota R	V	2623	8 mm
Front Right	215/65R16	86T	Velocity	Rota R	V	2623	8 mm
Rear Left	215/65R16	98T	Velocity	Rota R	V	2623	8 mm
Rear Right	215/65R16	98T	Velocity	Rota R	V	2623	8 mm

* Tyre Legend: V=Virgin, R=Recap

Tyre tread depth minimum 1mm according to National Road Traffic Act 93 of 1996.

Diagnostic

A vehicle diagnostic has not been conducted.

Inspection Conditions

Vehicle Dirty

Engine number – not possible to verify engine number (not visible without dismantling)

Inspection conditions for the vehicle inspection were sufficient

Comments

General Comments: ACCORDING TO THE AGE AND MILEAGE OF THE VEHICLE, NORMAL WEAR AND TEAR MARKS ARE VISIBLE ON THE INTERIOR, EXTERIOR, ELECTRICAL AND MECHANICAL PARTS.

Body • Exterior: Minor Dents, Chips and Scratches. Signs of cosmetical improvement on various panels.

Tyres and Rims: Spare wheel covered

Undercarriage: Belly plate not removed

Concluding Remarks

THIS REPORT HAS BEEN DRAWN UP IMPARTIALLY AND TO THE BEST OF OUR KNOWLEDGE

Technician

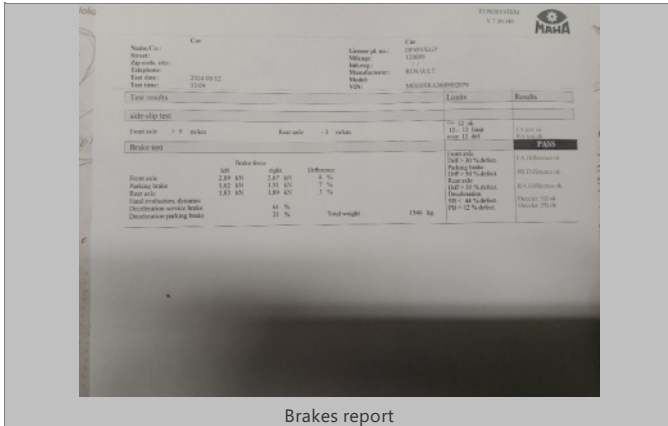
Thabo Moloto

This document was created electronically and is valid without signature.

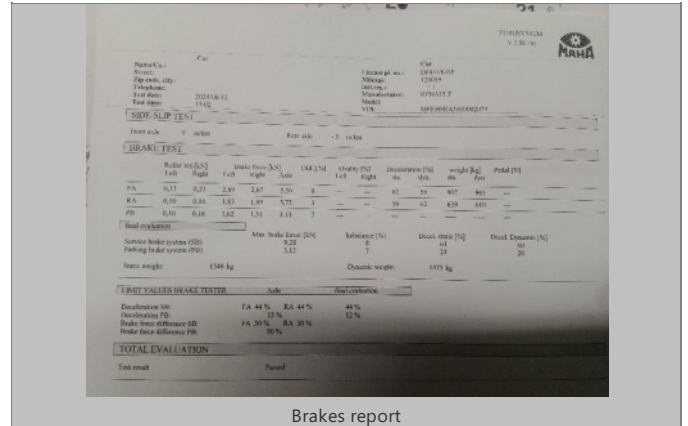
General Remarks: The DEKRA Condition Report Inspection is a visual and functional check of all the items listed inside the report. DEKRA is not liable for concealed and hidden defects. DEKRA doesn't check: oil and fuel consumption, source of a leak if the area is dirty, oil pump strainer for any build-up of sludge, operation of cassette players or compact disc players, sound or radio reception, alarm systems, cylinder compression. We don't dismantle, remove or strip any part of the vehicle. Road testing is carried out within the immediate confines of the inspection location. This condition report is valid only for the described vehicle and the described condition at the time of inspection. DEKRA Terms & Conditions apply.

ROADWORTHY RELEVANT DAMAGES

Damage	Repair Way	Repair Cost	%	Pro Rata
During test no defective for	Roadworthy Relevant	0	0 %	0
Total:		0		0



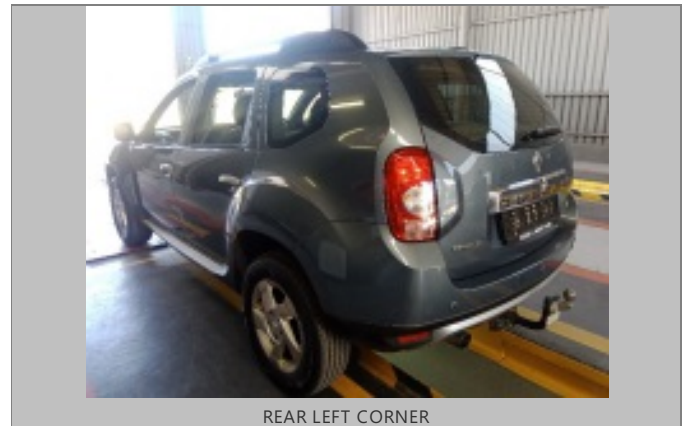
Brakes report



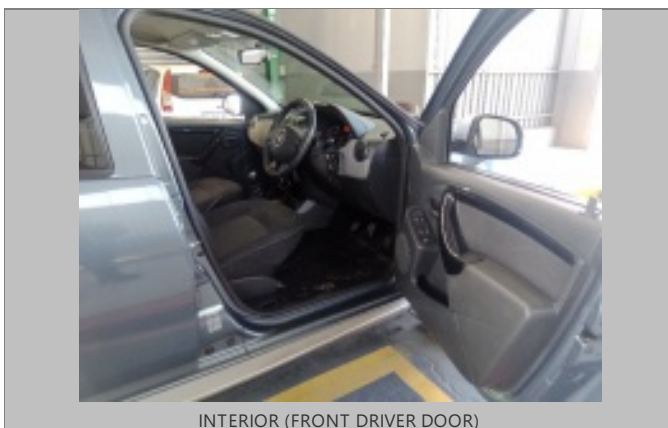
Brakes report



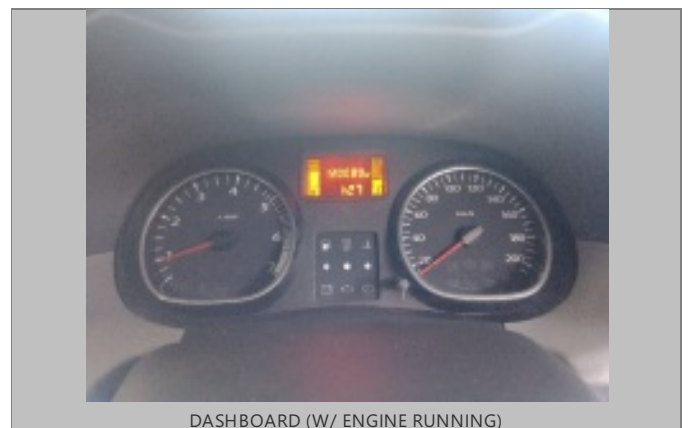
FRONT RIGHT CORNER



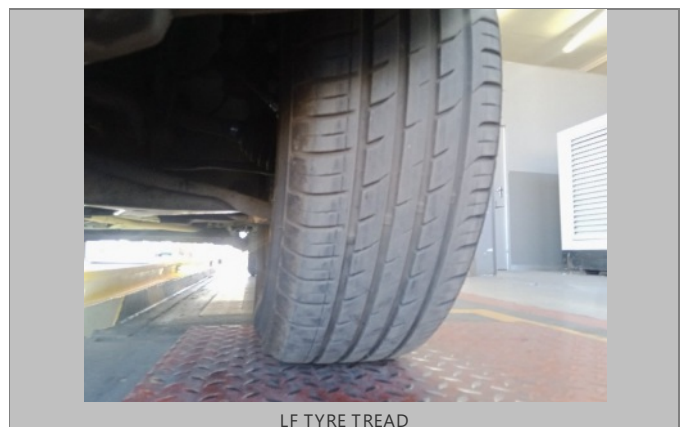
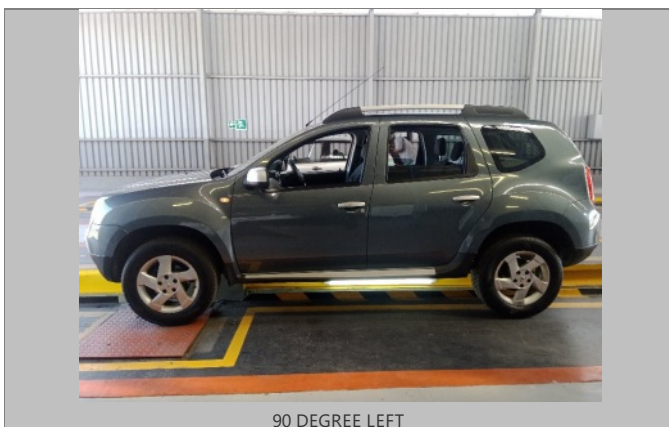
REAR LEFT CORNER



INTERIOR (FRONT DRIVER DOOR)



DASHBOARD (W/ ENGINE RUNNING)

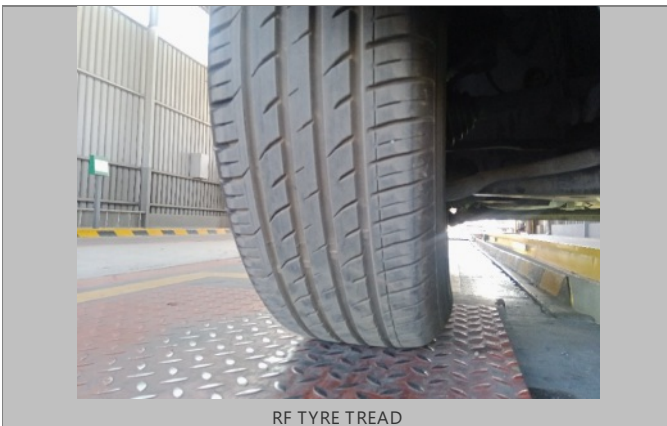




LR TYRE TREAD



RR TYRE TREAD



RF TYRE TREAD



Sparewheel



LICENSE DISC



VIN PLATE OR STICKER

