

KOOS & MIKE USED CARS  
, VANDERBIJLPARK  
Gauteng

DEKRA Vanderbijl Park  
Jorissen Str - 1911  
VANDERBIJLPARK - GT  
016 931 3126



### Assignment

Client	KOOS & MIKE USED CARS	Inspection Location	DEKRA Vanderbijl Park
Requested Date	01/10/2024		Jorissen Street - 1911
Inspection Date	01/10/2024		Vanderbijlpark -

### Vehicle Data

Vehicle Type	PASSENGER VEHICLE	Registered Owner	KOOS & MIKE ON
Manufacturer	FIAT	Registration Number	FW12PZGP
Model	500 X	Register Number	WSJ257W
VIN	ZFA334000P424500	Date Of First Licensing	10/05/2017
Engine Number	552636242054660	Last COR	
Doors	5	Last COR	12/06/2024
Color	RED	License Expiry Date	31/08/2024
Year Model	2017	Power / Displacement	103kW/1368cc
Km Reading	46,312 KM	Paint Finish	M - METALLIC
Cab / Body Type	HATCHBACK	Fuel	PETROL
		Transmission	AUTOMATIC

### Vehicle Options & Accessories

#### Items

6 airbags; 4x electrical windows; ABS; Airconditioning; Alarm system; Alloy Wheels; Central locking; Cruise control; El. mirrors; Fog lights; Handsfree car kit; Leather interior; Leather steering wheel; Multifunction steering wheel; On-board computer; Park sensor; Power steering; Radio / Cassette; Rain sensor; Traction control system;

CENTER CONSOLE WITH 2 CUP HOLDERS, AUXILIARY AND USB PORT PARCEL TRAY, ISOFIX AND ROOF RAILS.

## VEHICLE INSPECTION

### Interior

No negative smell was detected in the vehicle interior. The condition of the seats is good and the seats show no mechanical defects. Interior trim and/or roof lining and/or carpets show minor signs of wear and/or minor staining. Dashboard with minor signs of wear. The cluster without any defects. The functions of heating and ventilation are without detectable defects. The function of control units and/or instrument cluster is without detectable faults. The testable functions of the air condition is without deficiencies. The function of the electric windows is defect-free. Defects were detected on the electric seats and/or seat heaters. Service due and the service record complete.

### Exterior

The rims show no defects which affect the function. The mechanics of doors / bonnet / tailgate are defect-free. No residual traces of damage repair were detected. The vehicle shows normal signs of wear & tear according to age and milage. Vehicle Body with several dents or scratches or corrosion (edge corrosion / surface corroded). Minor paint damage to the primer were detected. The glass panes have stone chips and/or scratches. Hang-on parts (grill, bumpers, mirrors, antennas, strips, etc.) show minor damages. The spare wheel / Emergency Wheel / Repair Set is like new. The tire tread depth is more than 1 mm. The tires are in good condition

### Engine, Gearbox, Drivetrain

The engine-oil level is normal with no visible signs of contamination. The cooling system is without testable defects. The coolant level is normal. The engine shows traces of oil sweat. The gearbox and/or drive shaft show traces of oil sweat. The exhaust system shows signs of damages and/or rust, the functionality is not affected. During the road test no deficiencies were detected on gearshift, clutch, automatic transmissions. During the road test no atypical noises were detected. Minor defects were detected on engine, gearbox, drivetrain - the functionality is not affected.

### Axles, Undercarriage

The break fluid level is normal with no visible signs of contamination. Brake pads and discs show signs of wear & tear. The brake pads and/or discs show signs of wear & tear. The undercarriage with minor damages. Minor defects on axles an / or suspension were detected - the functionality is not affected.

## Brakes

### Brake Test Results

Brake efficiency tested during road test.

	Left	Right	Axle Weight [KG]	Deceleration [m/s <sup>2</sup> ]
	Braking Force [KN]	Braking Force [KN]		
Front	3.07	2.6	-	
Rear	1.94	1.77	-	
Emergency / Parking	167	1.56	-	

## Tyres and Rims

### Tyre Specification & Measurement

	Size	Load/Speed Index	Manufacture	Model	Type*	Production Date	Tread Depth (mm)
Front Left	215/55R17	94V	Continental	Contact	V	0220	3 mm
Front Right	215/55R17	94V	Continental	Contact	V	0220	4 mm
Rear Left	215/55R17	94V	Continental	Contact	V	4215	5 mm
Rear Right	215/55R17	94V	Continental	Contact	V	4215	6 mm
Spare	215/55R17	94V	Continental	Contact	V	4215	7 mm

\* Tyre Legend: V=Virgin, R=Recap

Tyre tread depth minimum 1mm according to National Road Traffic Act 93 of 1996.

## Diagnostic

A vehicle diagnostic has not been conducted.

## Inspection Conditions

Vehicle Dirty

Engine number – not possible to verify engine number (not visible without dismantling)

Inspection conditions for the vehicle inspection were sufficient

## Comments

General Comments: ACCORDING TO THE AGE AND MILEAGE OF THE VEHICLE, NORMAL WEAR AND TEAR MARKS ARE VISIBLE ON THE INTERIOR, EXTERIOR, ELECTRICAL AND MECHANICAL PARTS.NO ELECTRICAL ADJUSTABLE SEATS=INSUFFICIENT.

## Concluding Remarks

THIS REPORT HAS BEEN DRAWN UP IMPARTIALLY AND TO THE BEST OF OUR KNOWLEDGE

## Technician

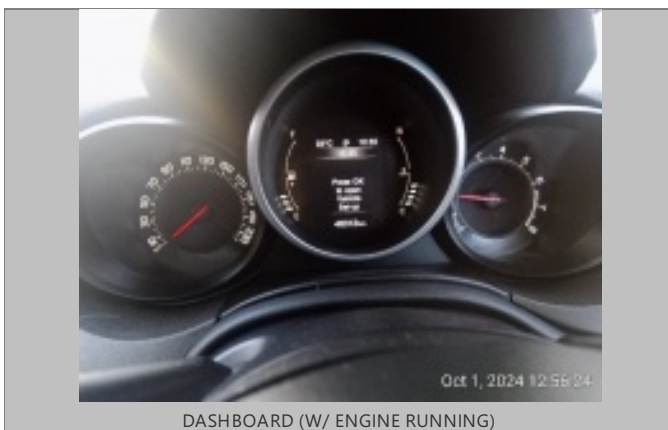
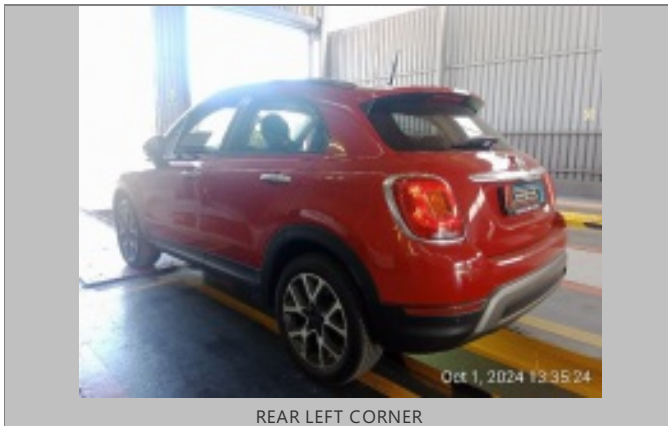
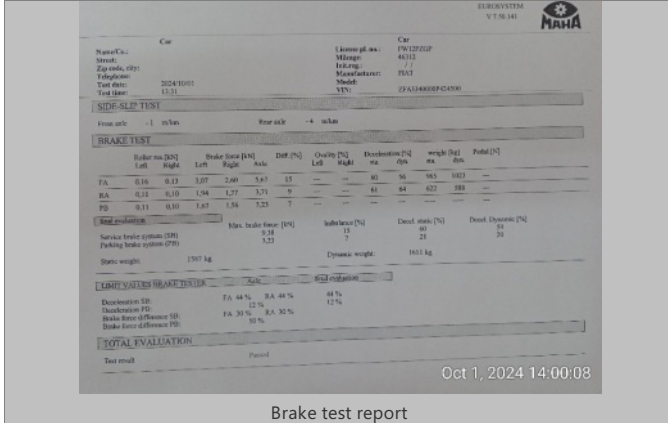
Petrus Mapongwane Makhubo

This document was created electronically and is valid without signature.

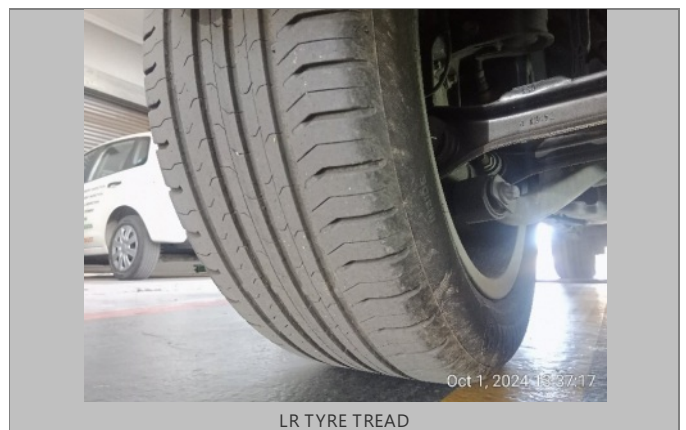
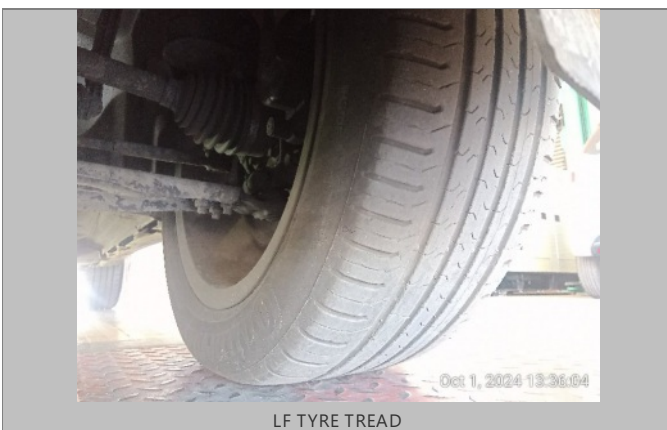
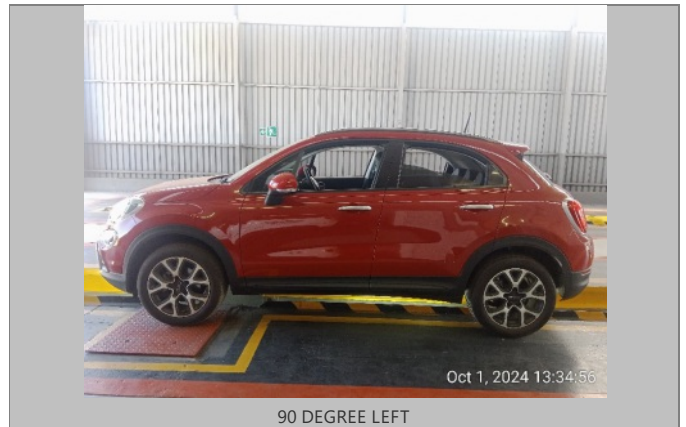
General Remarks: The DEKRA Condition Report Inspection is a visual and functional check of all the items listed inside the report. DEKRA is not liable for concealed and hidden defects. DEKRA doesn't check: oil and fuel consumption, source of a leak if the area is dirty, oil pump strainer for any build-up of sludge, operation of cassette players or compact disc players, sound or radio reception, alarm systems, cylinder compression. We don't dismantle, remove or strip any part of the vehicle. Road testing is carried out within the immediate confines of the inspection location. This condition report is valid only for the described vehicle and the described condition at the time of inspection. DEKRA Terms & Conditions apply.

ROADWORTHY RELEVANT DAMAGES

Damage	Repair Way	Repair Cost	%	Pro Rata
During time of the test no defects were detected.	Roadworthy Relevant	0	0 %	0
<b>Total:</b>		<b>0</b>		<b>0</b>

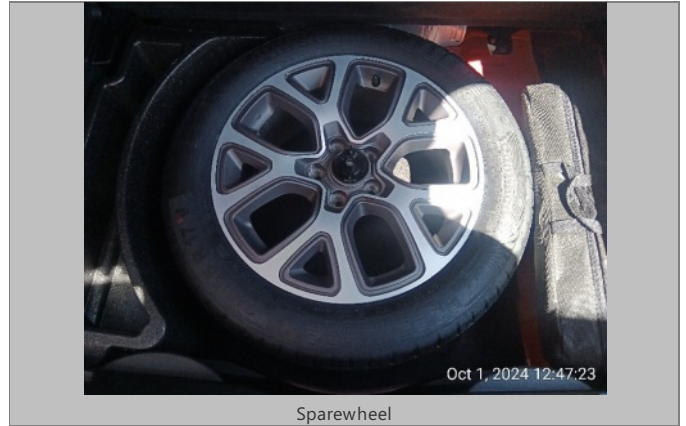




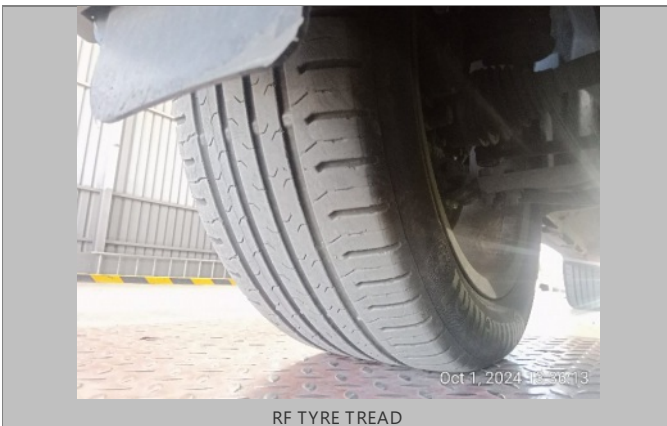




RR TYRE TREAD



Sparewheel



RF TYRE TREAD



LICENSE DISC



VIN PLATE OR STICKER



ENGINE 1



