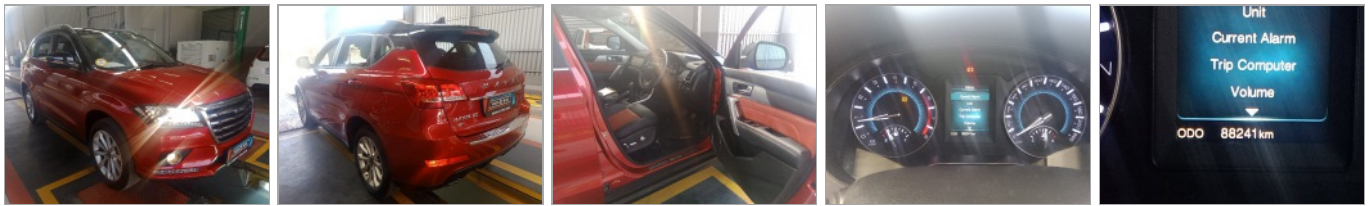


KOOS & MIKE USED CARS
, VANDERBIJLPARK
Gauteng

DEKRA Vanderbijl Park
Jorissen Str - 1911
VANDERBIJLPARK - GT
016 931 3126



Assignment

Client	KOOS & MIKE USED CARS	Inspection Location	DEKRA Vanderbijl Park
Requested Date	22/09/2023		Jorissen Street - 1911
Inspection Date	22/09/2023		Vanderbijlpark - GT

Vehicle Data

Vehicle Type	PASSENGER VEHICLE	Registered Owner	KOOS AND MIKE USED CARS
Manufacturer	GREAT WALL MOTORS	Registration Number	JB19JPGP
Model	HAVAL H2 2WD	Register Number	HLV370L
VIN	LGWEE4A45KH906138	Date Of First Licensing	11/06/2019
Engine Number	COVERED	Last COR	2019-06-11
Doors	5	License Expiry Date	31/07/2024
Color	RED	Power / Displacement	105kw1497ccm
Year Model	2019	Paint Finish	C - COMMON
Km Reading	88,241 KM	Fuel	PETROL
Cab / Body Type	STATION WAGON	Transmission	MANUAL

Vehicle Options & Accessories

Items

8 airbags; 4x electrical windows; ABS; Airconditioning auto.; Alarm system; Alloy Wheels; Central locking; Cruise control; Driver's seat elec.; El. fold-away mirrors; ESP (el. stability progr.); Fog lights; Handsfree car kit; Leather interior; Leather steering wheel; Multifunction steering wheel; On-board computer; Park sensor; Power steering; Rain sensor; Sun roof; Xenon headlights;

Brakes

Brake Test Results

	Left	Right	Axle Weight [KG]	Deceleration [m/s ²]
	Braking Force [KN]	Braking Force [KN]		
Front	3.2	3.1	965	65.0
Rear	2.1	2.0	702	65.0
Emergency / Parking	1.9	1.7	702	23

Tyres and Rims

Tyre Specification & Measurement

	Size	Load/Speed Index	Manufacture	Model	Type*	Production Date	Tread Depth (mm)
Front Left	235/55R18	100H	Kumho	Solus	V	1119	3 mm
Front Right	235/55R18	100H	Kumho	Solus	V	1119	3 mm
Rear Left	235/55R18	100H	Kumho	Solus	V	1119	4 mm
Rear Right	235/55R18	100H	Kumho	Solus	V	1119	4 mm
Spare	T 155/85R18	115M	Chao Yang	RP03	V	----	0 mm

* Tyre Legend: V=Virgin, R=Re-cap

Diagnostic

A vehicle diagnostic has not been conducted.

Inspection Conditions

Vehicle Dirty
 Engine number – not possible to verify engine number (not visible without dismantling)
 Inspection conditions for the vehicle inspection were sufficient

Comments

General Comments: ACCORDING TO AGE AND MILEAGE OF THE VEHICLE NORMAL WEAR AND TEAR MARKS ARE VISIBLE ON INTERIOR, EXTERIOR AND MECHANICAL PARTS. Body • Exterior: Minor Dents, Chips and Scratches. Signs of cosmetic improvement on various panels. Windscreen chips.

Options & Accessories

HAS AUX AND USB

Concluding Remarks

THIS REPORT HAS BEEN DRAWN UP IMPARTIALLY AND TO THE BEST OF OUR KNOWLEDGE

Technician

Thabo Moloto

This document was created electronically and is valid without signature.

General Remarks: The DEKRA Condition Report Inspection is a visual and functional check of all the items listed inside the report. DEKRA is not liable for concealed and hidden defects. DEKRA doesn't check: oil and fuel consumption, source of a leak if the area is dirty, oil pump strainer for any build-up of sludge, operation of cassette players or compact disc players, sound or radio reception, alarm systems, cylinder compression. We don't dismantle, remove or strip any part of the vehicle. Road testing is carried out within the immediate confines of the inspection location. This condition report is valid only for the described vehicle and the described condition at the time of inspection. DEKRA Terms & Conditions apply.



Front chassis



Rear chassis



Spare wheel



Coolant level



Oil cap and Dipstick



Windscreen chip

NON-SLIP TEST

Test axle	1 - left	2 - right
Brake slip (%)	0.10	0.10

BRAKE TEST

Test axle	Brake force (kN)		DME (%)	Drum (%)		Discrimination (%)	Weight (kg)	Prest. (N)
	Left	Right		Left	Right			
FA	0.10	0.10	0.10	0.10	0.10	0.10	0.10	0.10
RA	0.12	0.12	0.12	0.12	0.12	0.12	0.12	0.12

Brake test

Test axle	Brake force (kN)	Discrimination (%)	Weight (kg)	Prest. (N)
Front axle	1.20 kN	2.20 kN	0.10 %	0.10
Rear axle	1.01 kN	1.21 kN	0.10 %	0.10
Front axle	2.13 kN	2.20 kN	0.10 %	0.10

TOTAL EVALUATION

Test result: Passed

Brakes report

NON-SLIP TEST

Test axle	1 - left	2 - right
Brake slip (%)	0.10	0.10

BRAKE TEST

Test axle	Brake force (kN)		DME (%)	Drum (%)		Discrimination (%)	Weight (kg)	Prest. (N)
	Left	Right		Left	Right			
FA	0.10	0.10	0.10	0.10	0.10	0.10	0.10	0.10
RA	0.12	0.12	0.12	0.12	0.12	0.12	0.12	0.12

Brake test

Test axle	Brake force (kN)	Discrimination (%)	Weight (kg)	Prest. (N)
Front axle	1.20 kN	2.20 kN	0.10 %	0.10
Rear axle	1.01 kN	1.21 kN	0.10 %	0.10
Front axle	2.13 kN	2.20 kN	0.10 %	0.10

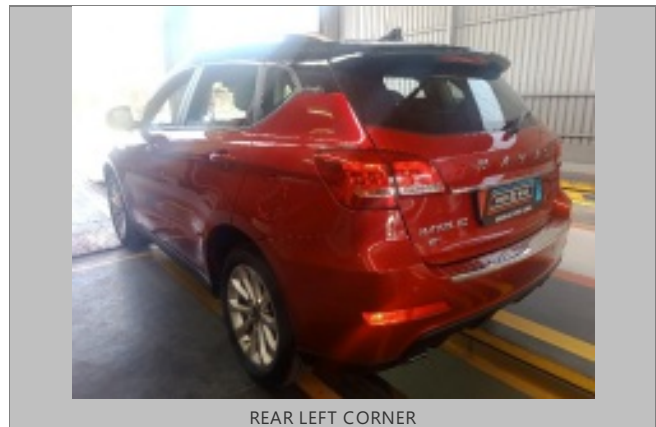
TOTAL EVALUATION

Test result: Passed

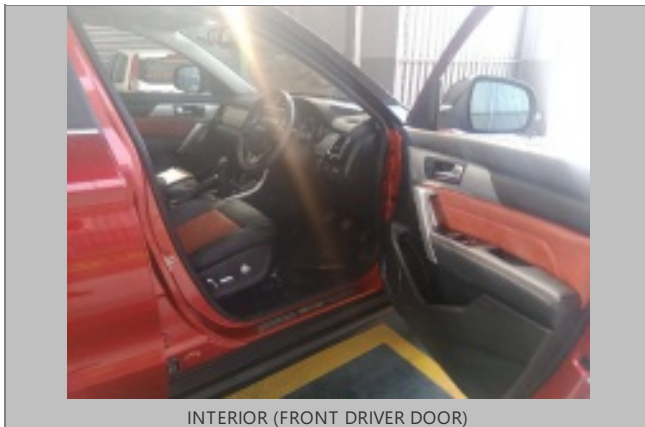
Brakes report



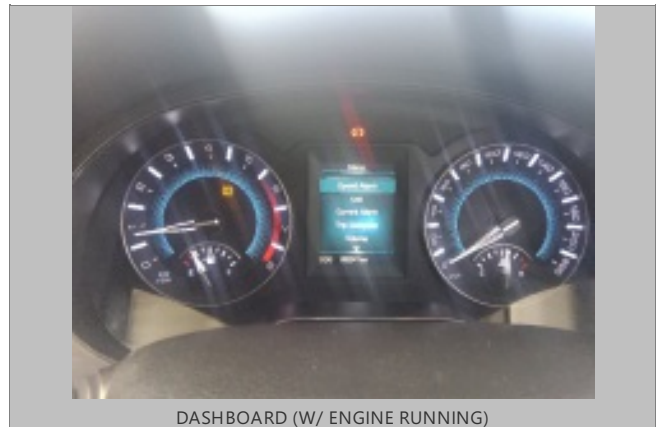
FRONT RIGHT CORNER



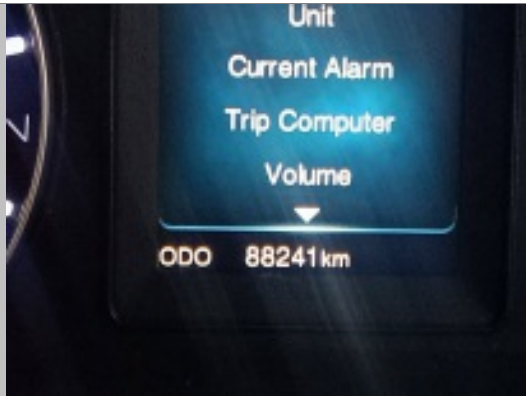
REAR LEFT CORNER



INTERIOR (FRONT DRIVER DOOR)



DASHBOARD (W/ ENGINE RUNNING)



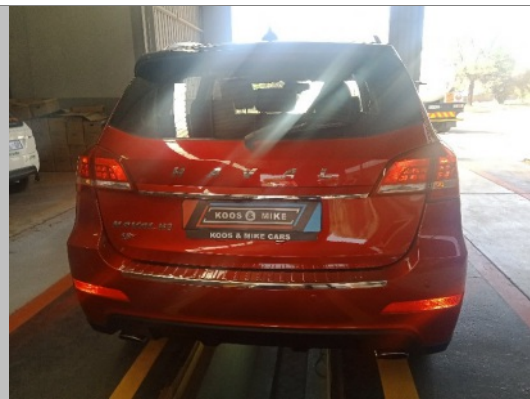
ODOMETER



90 DEGREE FRONT



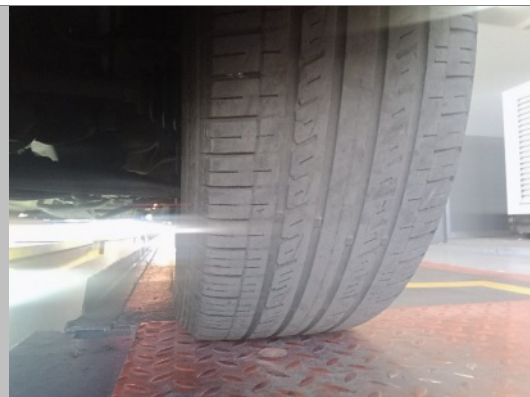
90 DEGREE RIGHT



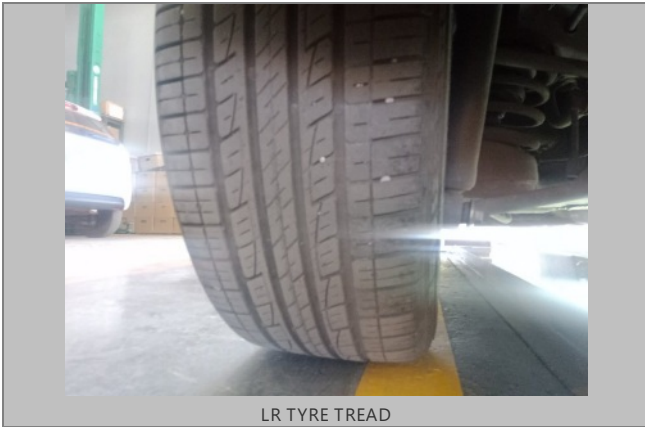
90 DEGREE REAR



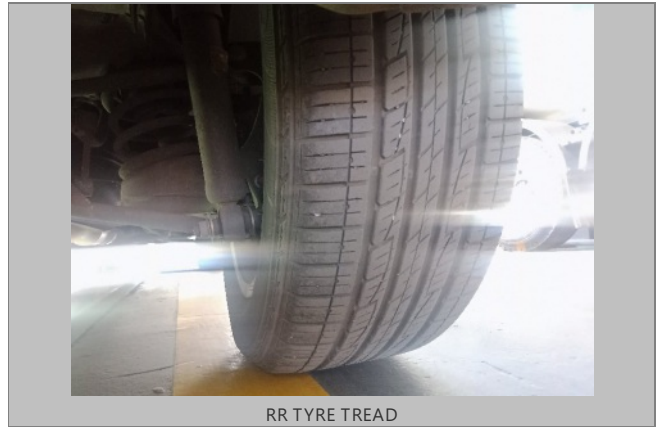
90 DEGREE LEFT



LF TYRE TREAD



LR TYRE TREAD



RR TYRE TREAD



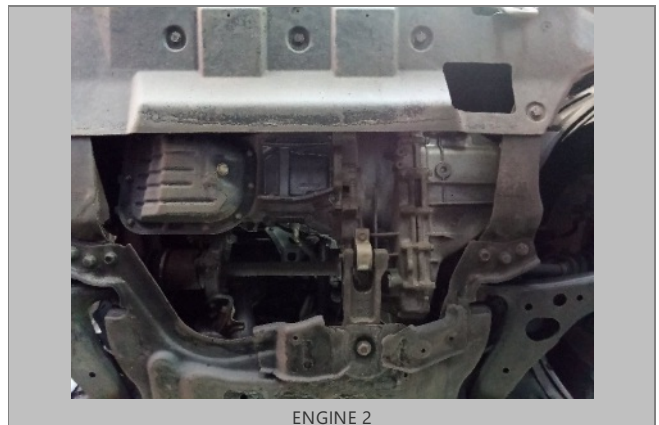
RF TYRE TREAD



LICENSE DISC



VIN PLATE OR STICKER



ENGINE 2



PROTOCOL DECALS



PANEL



ENGINE 1